

# DC Permanent Magnet SCR Rated, Totally Enclosed C-Face Footed (Removable Base)



## Features:

- Class F insulation
- NEMA C-Face with removable rigid base
- Oversized brushes for extra long life
- Permanently lubricated sealed ball bearings
- Linear speed/torque characteristics over entire speed range
- High starting torque, high peak current capability
- Usable on PWM type DC adjustable speed drives at higher HP rating
- Easy brush access with unique brush holder design
- UL Recognized and CSA Certified

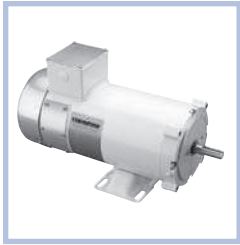
HP	RPM	DC VOLTS	FRAME	ENCL.	CAT. NO.	MODEL NO.	STOCK	LIST PRICE	MULT. SYMB.	C.T. SPEED RANGE	F.L. AMPS	PWM HP RATING	"C" DIM.	FOOT NOTES
1/4	1750	90	56C	TEFC	Z602	56E17F1001	★	\$463	D1	2:1	2.5	0.40	10.81	
	1750	180	56C	TEFC	Z603	56E17F1002	★	\$463	D1	2:1	1.4	0.50	11.31	
1/3	1750	90	56C	TEFC	Z604	56E17F1003	★	\$491	D1	2:1	3.5	0.50	11.31	
	1750	180	56C	TEFC	Z605	56E17F1004	★	\$491	D1	2:1	1.7	0.50	11.31	
1/2	1750	90	56C	TEFC	Z606	56E17F1005	★	\$547	D1	2:1	5.0	0.70	11.81	
	1750	180	56C	TEFC	Z607	56E17F1006	★	\$547	D1	2:1	2.5	0.56	11.81	
3/4	1750	90	56C	TEFC	Z610	56E17F1007	★	\$664	D1	2:1	7.6	1.00	13.81	
	1750	180	56C	TEFC	Z611	56E17F1008	★	\$664	D1	2:1	3.8	1.00	13.81	
1	1750	90	56C	TEFC	Z612	56E17F2005	★	\$811	D1	2:1	10.0	1.25	15.81	
	1750	180	56C	TEFC	Z613	56E17F2006	★	\$811	D1	2:1	5.0	1.25	14.81	
1 1/2	1750	180	56C	TEFC	Z614	56E17F2007	★	\$1,014	D1	2:1	7.6	1.75	16.81	
	1750	180	145TC	TEFC	Z615	145TEFR5326	★	\$1,540	D1	2:1	7.5	1.50	18.34	
2	1750	180	145TC	TEFC	Z616	145TEFR5327	★	\$1,837	D1	2:1	9.5	2.00	20.15	
	1750	180	182/145TC	TEFC	Z617	182TEFR5326	★	\$1,837	D1	2:1	9.5	2.00	19.34	84

## SCR PMDC motors on PWM power supplies

Pulse width modulated DC controls have a voltage output similar to pure direct current which has a form factor of 1.05. SCR thyristor drives have a form factor of 1.40. Marathon Electric's non-Explosion Proof PMDC, SCR-rated motors can also be used with PWM controls, and due to the lower form factor and the resultant lower heating in the motor, their rating can be increased as indicated above. Operation on PWM controls will also result in quieter operation and longer brush life.

# Washdown, DC Permanent Magnet SCR Rated, Totally Enclosed

## C-Face Footed (Removable Base)



### Features:

- Class F insulation
- NEMA C-Face with removable rigid base
- Oversized brushes for extra long life
- Doubled sealed, oversized ball bearings
- Corrosion resistant 303 stainless steel shaft
- "V" ring Forsheda seals
- High temperature, moisture resistant lubricant
- Exterior and interior components protected with enamel & polyester compounds
- Aluminum conduit box, threaded and gasketed
- Drains at 3:00, 6:00, 9:00 and 12:00 locations
- Sealed machine fits
- Stainless steel nameplate
- USDA approved white epoxy paint
- UL Recognized and CSA Certified

HP	RPM	DC VOLTS	FRAME	ENCL.	CAT. NO.	MODEL NO.	STOCK	LIST PRICE	MULT. SYMB.	C.T. SPEED RANGE	F.L. AMPS	PWM HP RATING	"C" DIM.	FOOT NOTES
1/4	1750	90	56C	TENV	Z630	56E17V2001	*	\$594	D1	20:1	2.7	0.30	10.69	
1/3	1750	90	56C	TENV	Z631	56E17V2002		\$629	D1	20:1	3.5	0.56	11.69	
1/2	1750	90	56C	TENV	Z634	56E17V2003	*	\$704	D1	20:1	4.9	0.75	13.69	
	1750	180	56C	TENV	Z635	56E17V2004	*	\$704	D1	20:1	2.4	0.70	13.69	
3/4	1750	90	56C	TENV	Z636	56E17V2005	*	\$854	D1	20:1	7.0	1.25	15.69	
	1750	180	56C	TENV	Z637	56E17V2006		\$854	D1	20:1	3.5	1.25	15.69	
1	1750	90	56C	TEFC	Z638	56E17W2001	*	\$1,042	D1	2:1	10.0	1.25	15.81	
	1750	180	56C	TEFC	Z639	56E17W2002	*	\$1,042	D1	2:1	5.0	1.25	14.81	
1 1/2	1750	180	56C	TEFC	Z641	56E17W2003		\$1,330	D1	2:1	7.6	1.75	16.81	

# Low Voltage, DC Permanent Magnet TENV and TEFC

## C-Face Footed (Removable Base)



### Applications:

Low voltage permanent magnet DC motors are suitable for installations having batteries or generator supplied low voltage DC.

### Features:

- Permanently lubricated sealed ball bearings
- NEMA C-Face with removable base
- Class H insulation
- Easy brush access with unique brush holder design
- Oversized brushes for extra long life
- High starting torque
- U.L. Recognized and CSA Certified

HP	RPM	DC VOLTS	FRAME	ENCL.	CAT. NO.	MODEL NO.	STOCK	LIST PRICE	MULT. SYMB.	F.L. AMPS	"C" DIM.	FOOT NOTES
1/4	1750	12	56C	TENV	Z660	56E17T2001	*	\$498	D1	21.0	10.44	85
1/3	1750	12	56C	TENV	Z662	56E17T2002	*	\$548	D1	27.0	11.44	d,85
	1750	24	56C	TENV	Z663	56E17T2003	*	\$524	D1	13.5	10.94	85
1/2	1750	12	56C	TENV	Z664	56E17T2004	*	\$569	D1	39.0	12.44	85
	1750	24	56C	TENV	Z665	56E17T2005	*	\$544	D1	20.0	11.94	d,85
3/4	1750	12	56C	TEFC	Z666	56E17F2008	*	\$629	D1	58.0	13.81	
	1750	24	56C	TEFC	Z667	56E17F2009	*	\$568	D1	29.0	12.81	85
1	1750	12	56C	TEFC	Z668	56E17F2010	*	\$749	D1	80.0	13.81	
	1750	24	56C	TEFC	Z669	56E17F2011	*	\$690	D1	39.0	13.81	85